



Provincia di Chieti Settore n.6

Pianificazione , Progettazione e manutenzione stradale - Concessioni - Espropri

LAVORI DI SISTEMAZIONE E ADEGUAMENTO DELLA
S.P.184 "FONDO VALLE TRESTE" - V° lotto funzionale
compreso tra il Km.11+751 e il Km.12+894

P
R
O
G
E
T
T
O

E
S
E
C
U
T
I
V
O

IL PROGETTISTA
Ing. Valentino SANSIVIERO

I Collaboratori
Arch. Domenica NATALE
Ing. Silvia SANSIVIERO

II R.U.P.
(Dott. Ing. Carlo CRISTINI)

ESECUTIVI STRUTTURALI PARATIE

DATA

SCALA

VARIE

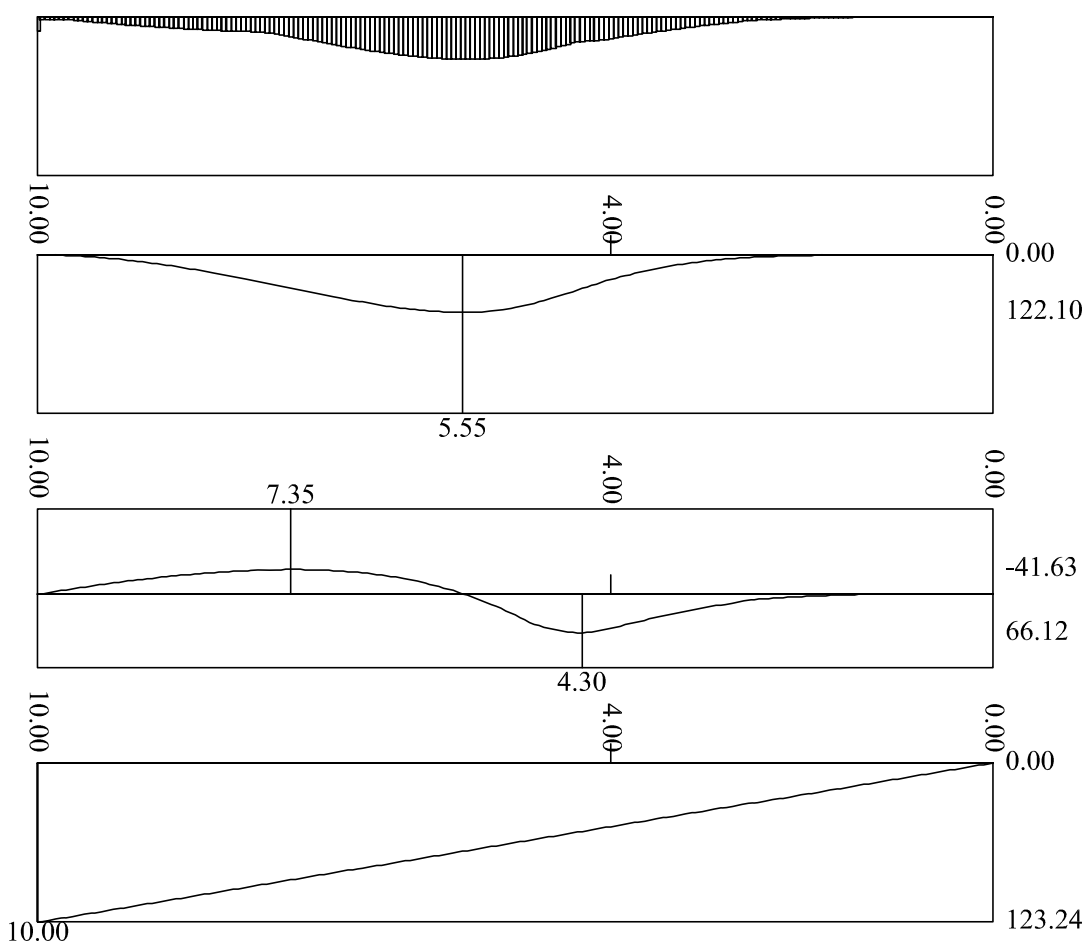
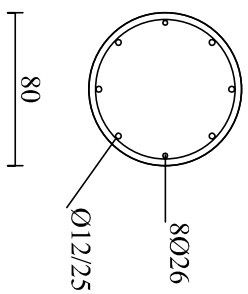
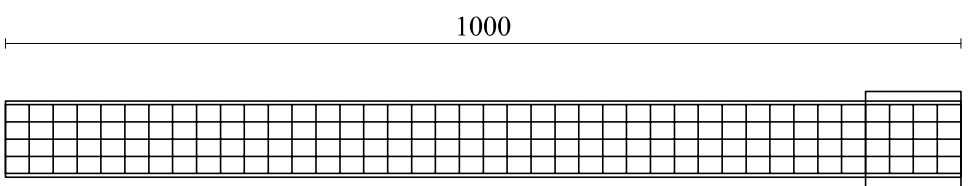
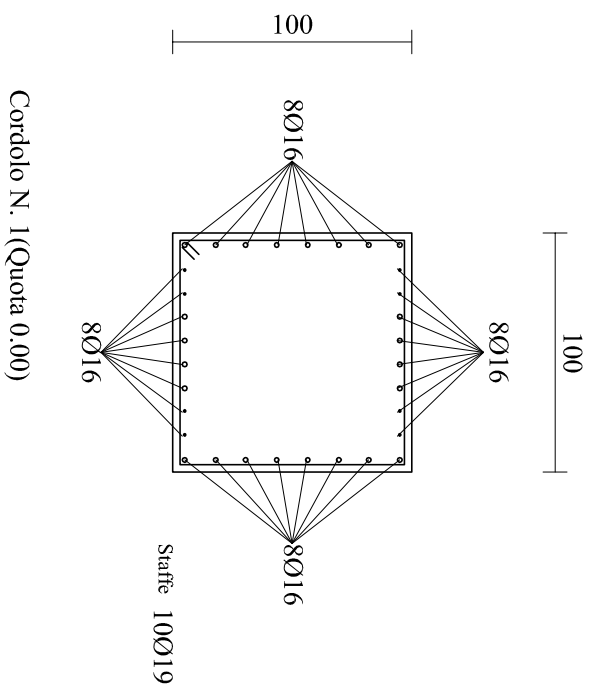
ALL.

4.3

Aggiornamenti:

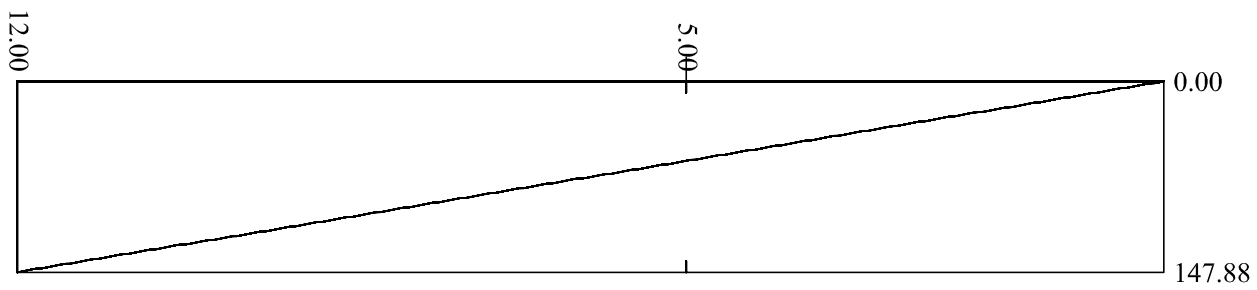
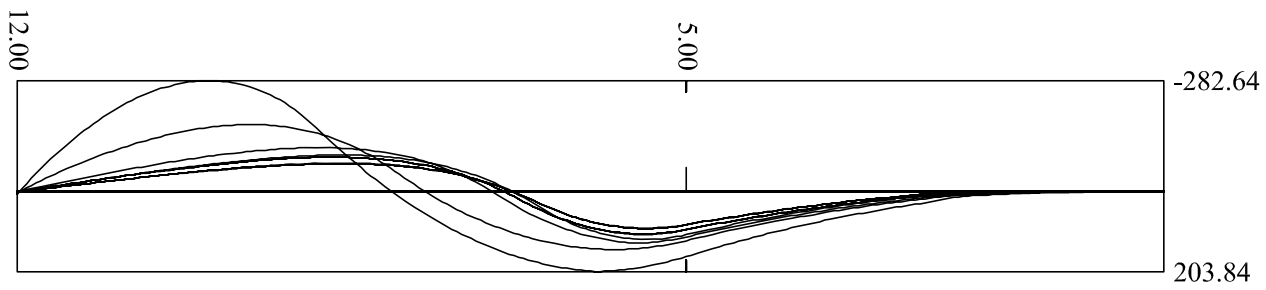
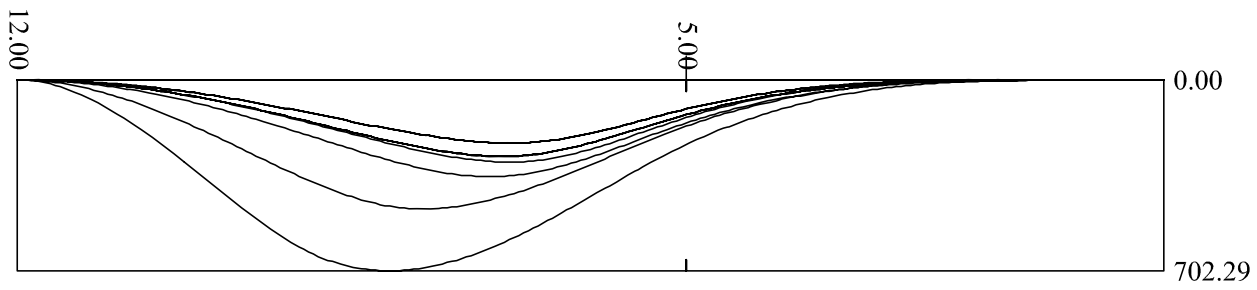
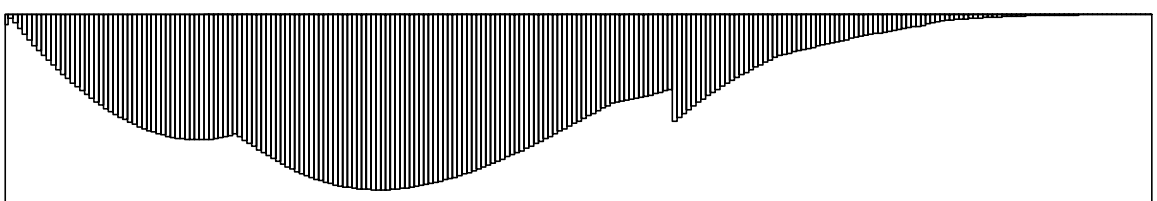
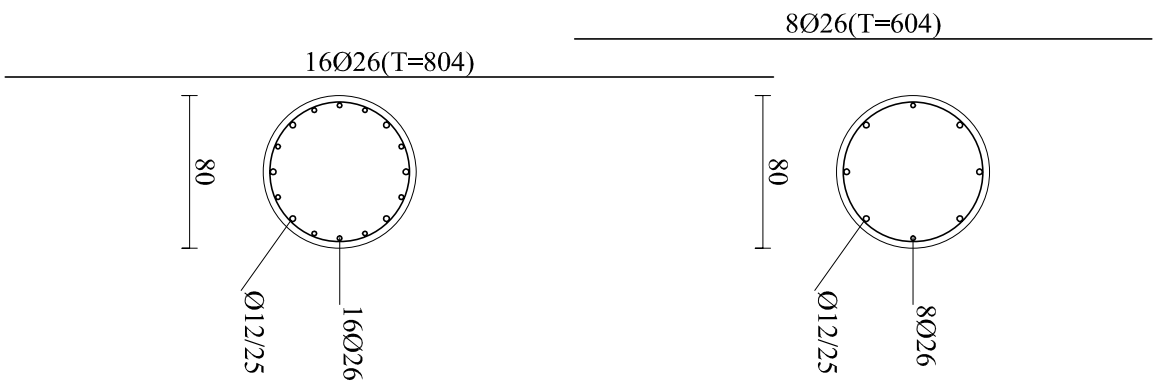
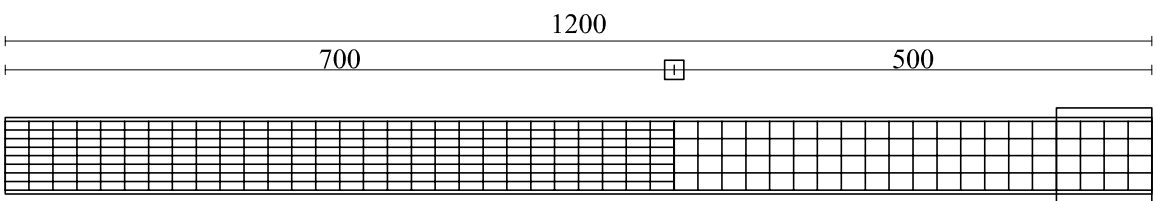
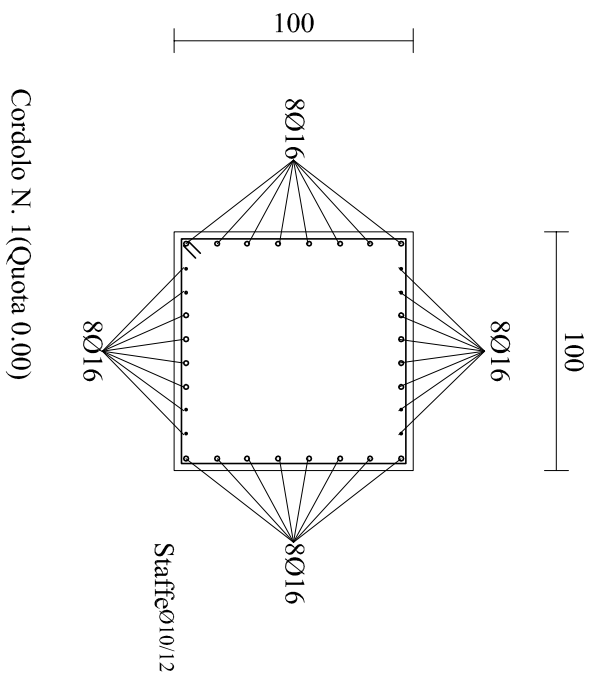
PARATIA H.3.00 - Scala 1:100

CORDOLO PARATIA H.3.00 - Scala 1:40



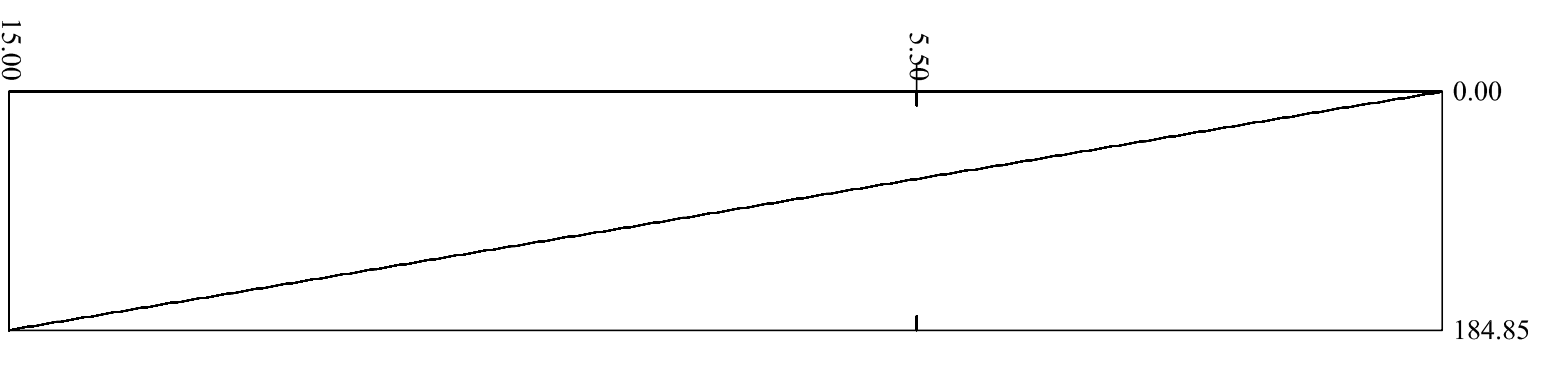
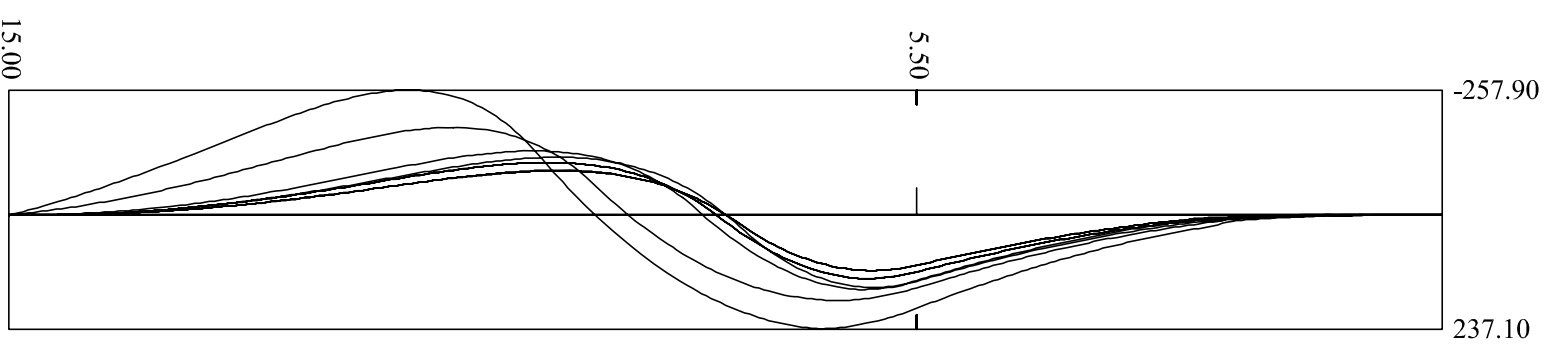
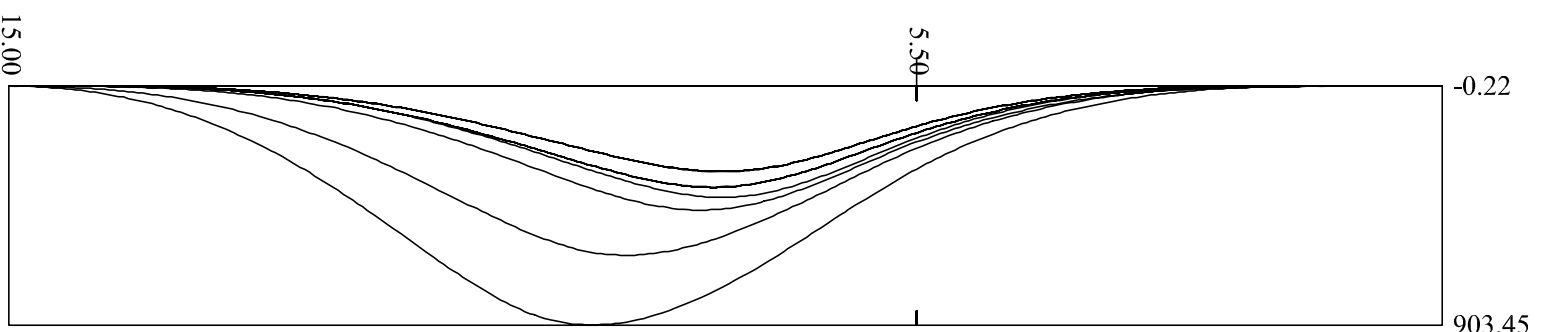
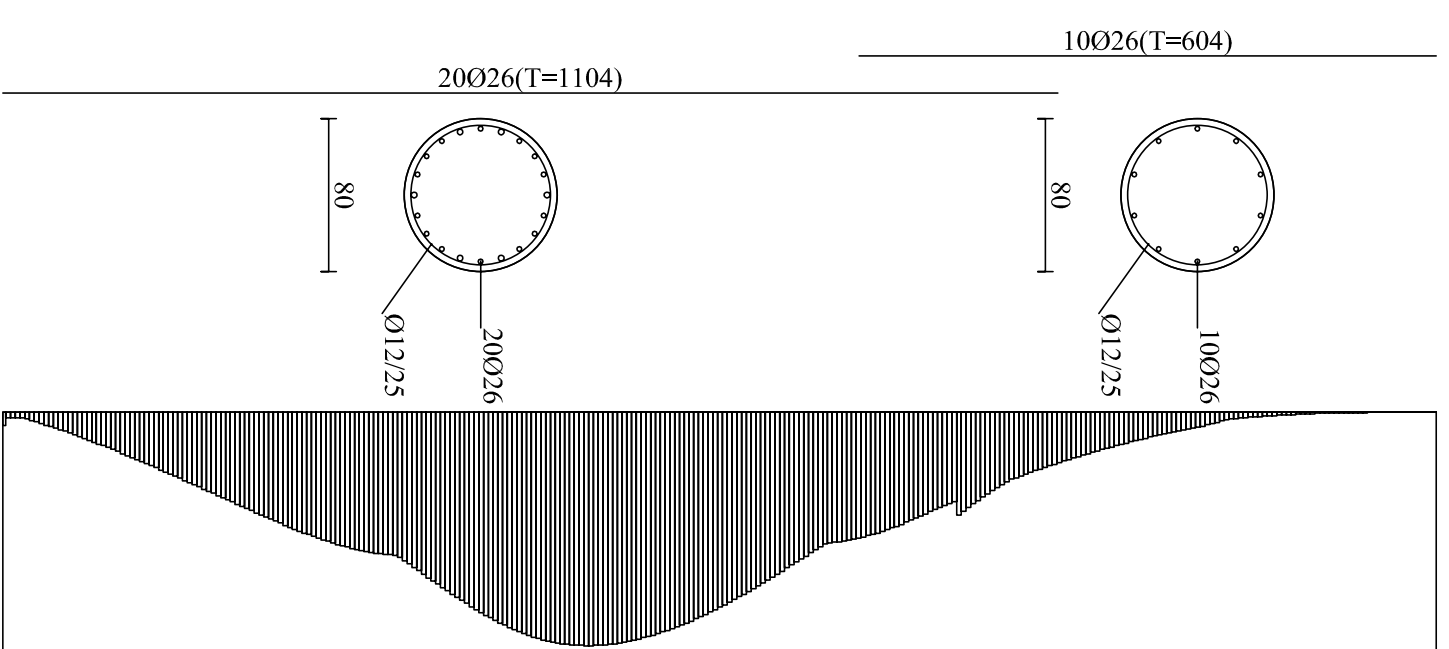
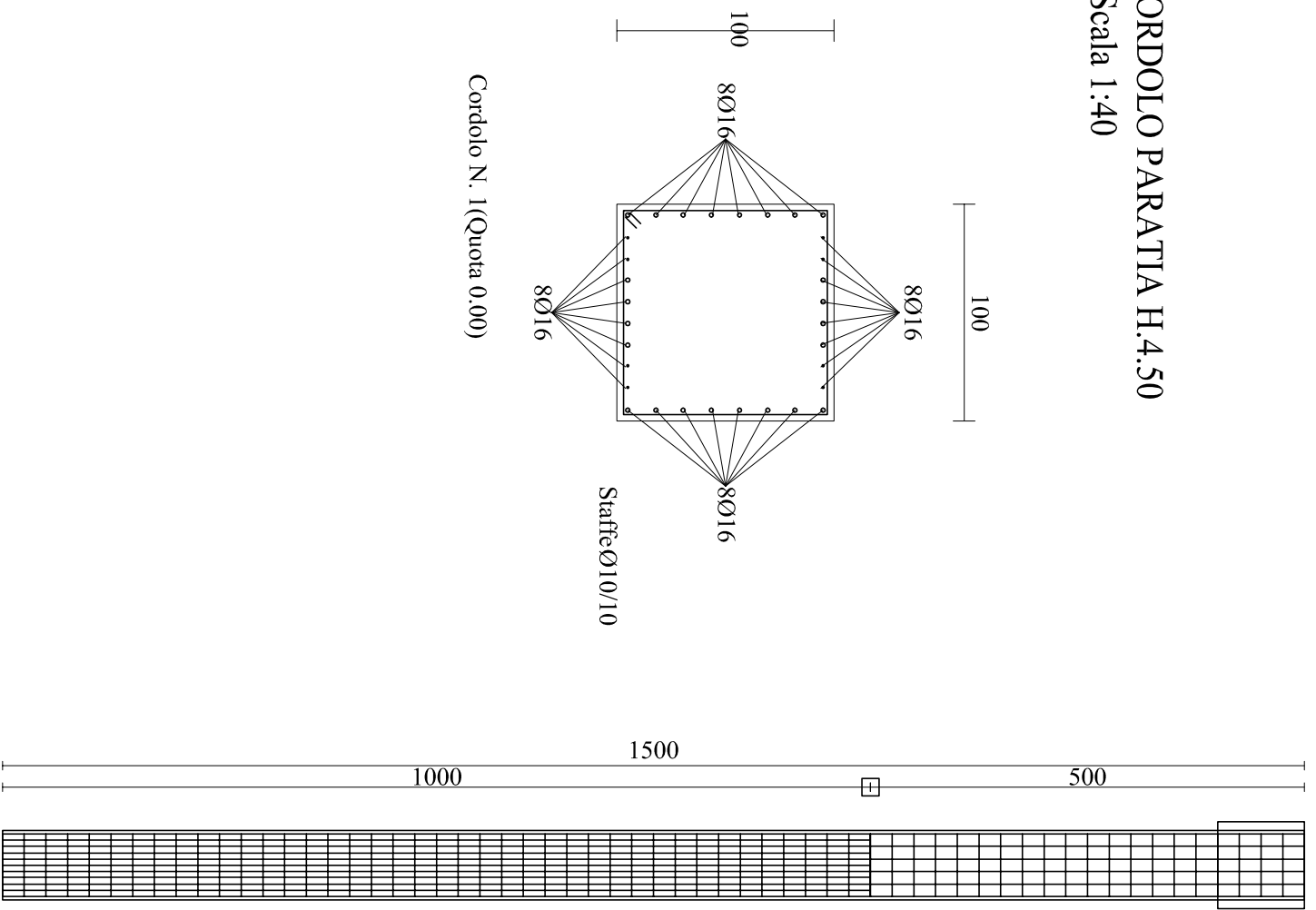
PARATIA H.4.00 - Scala 1:100

CORDOLO PARATIA H.4.00 - Scala 1:40



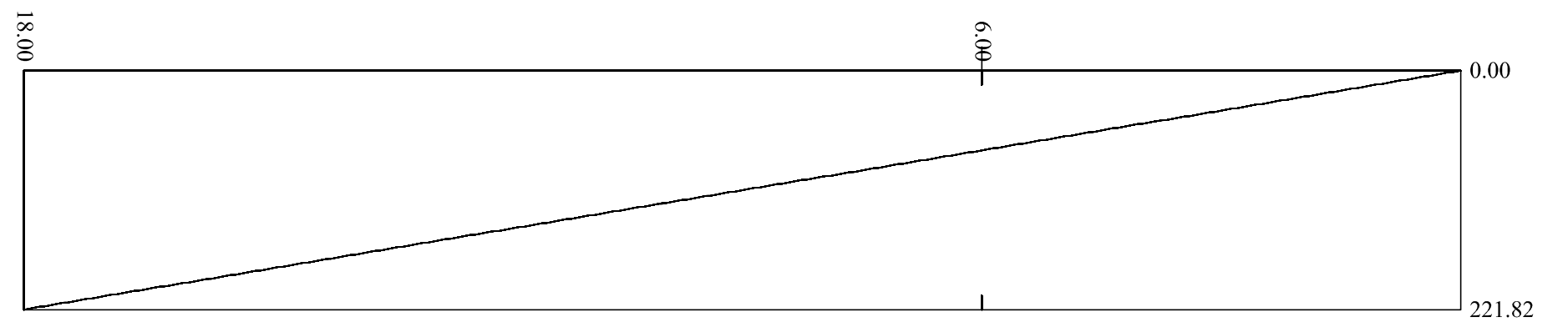
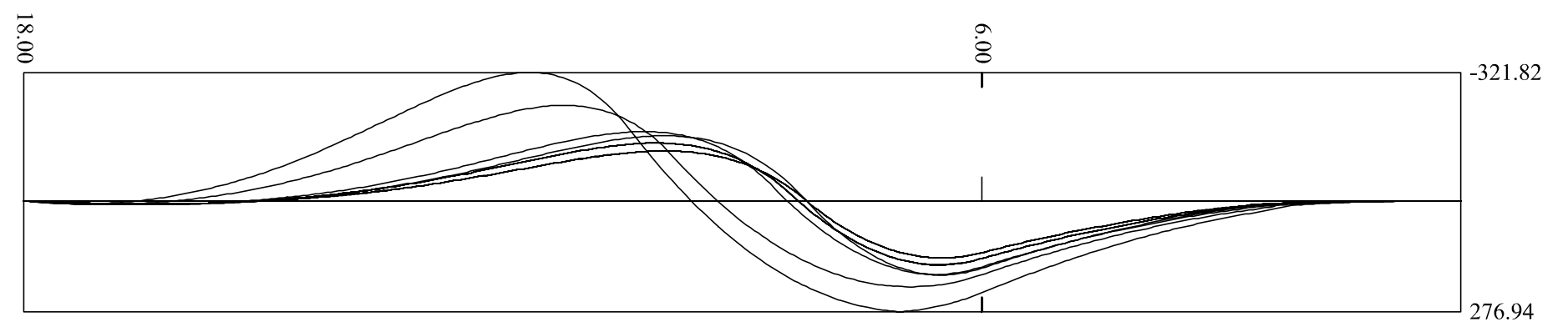
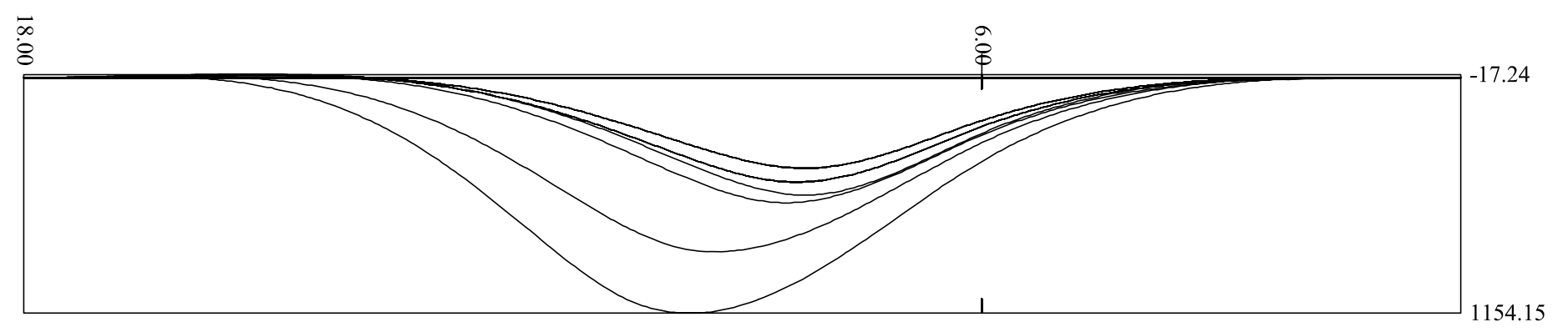
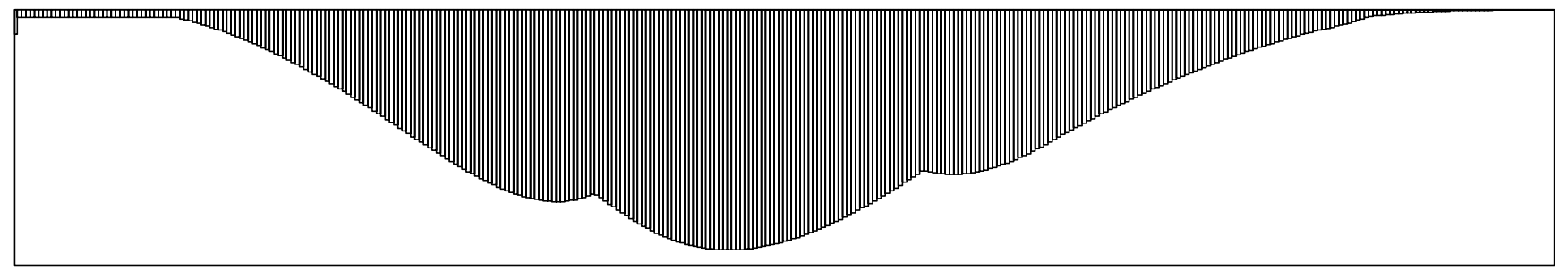
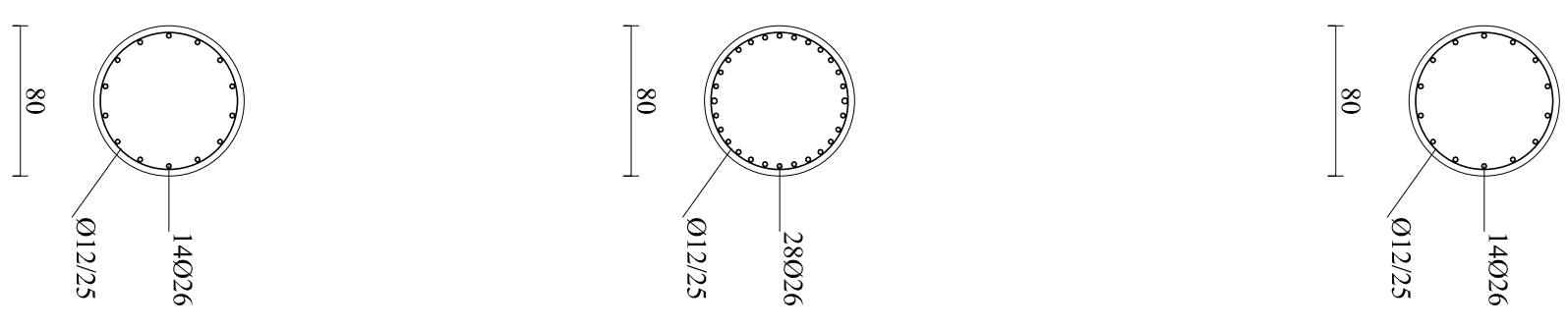
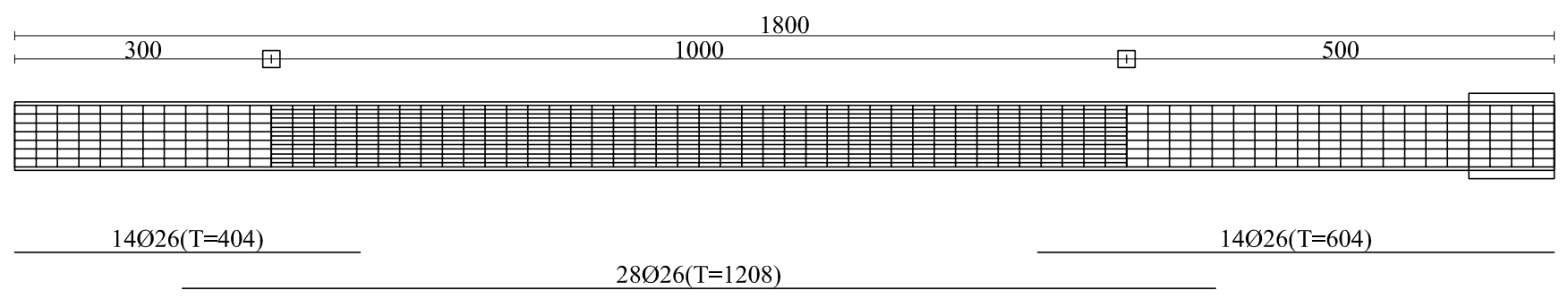
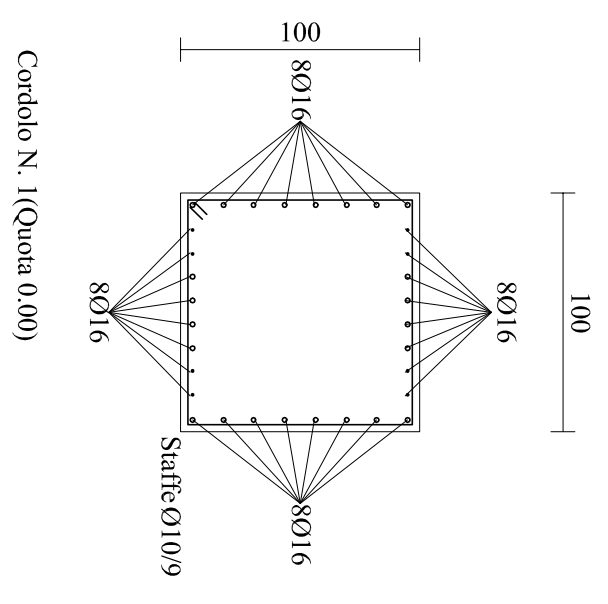
PARATIA H.4.50 - Scala 1:100

CORDOLO PARATIA H.4.50
- Scala 1:40



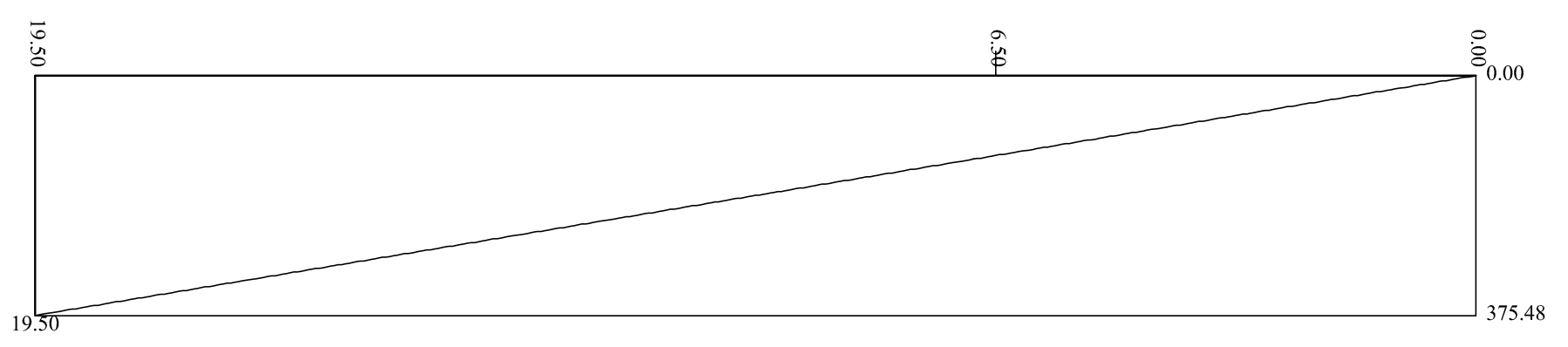
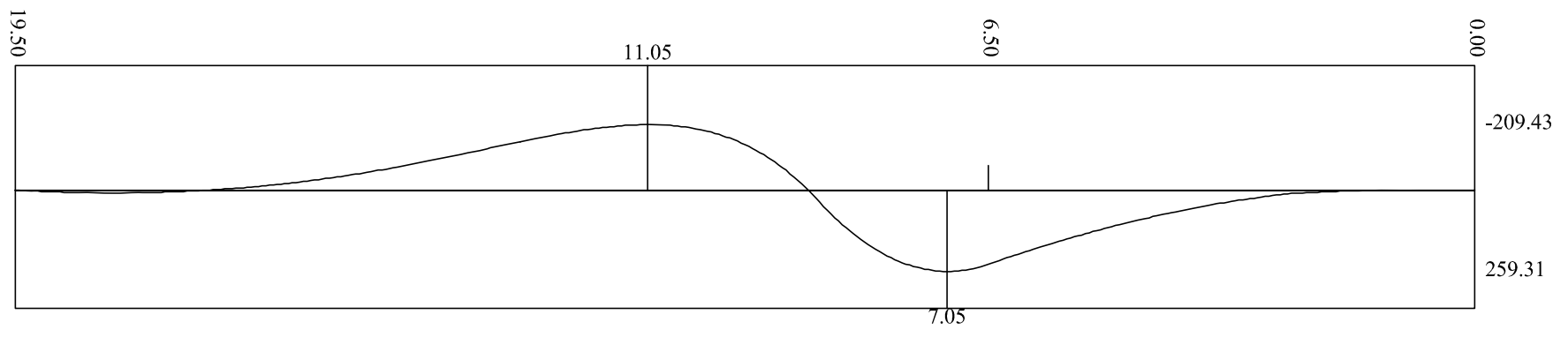
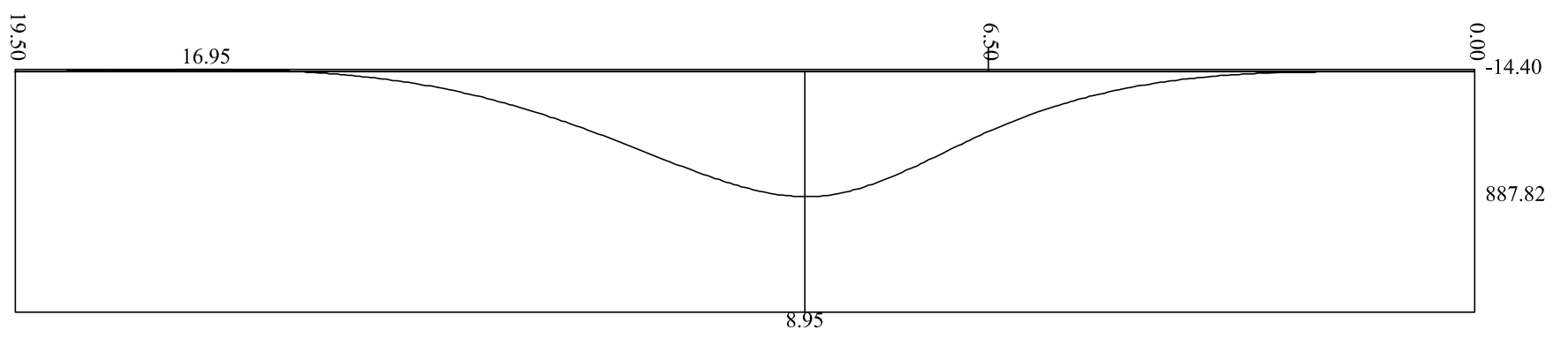
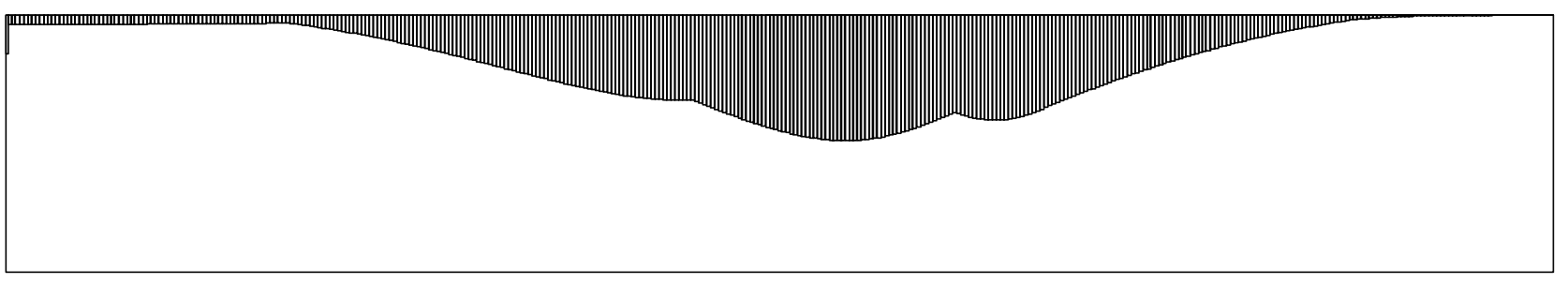
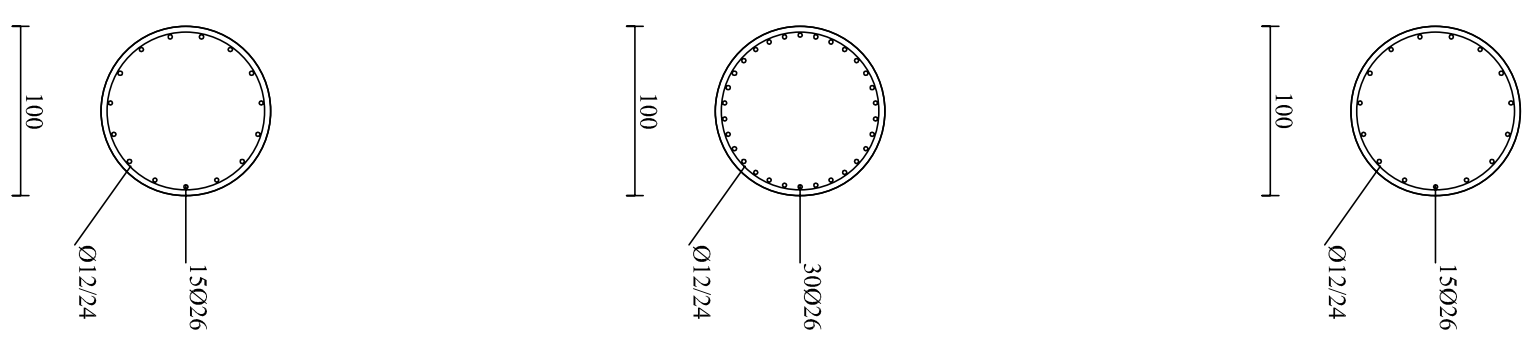
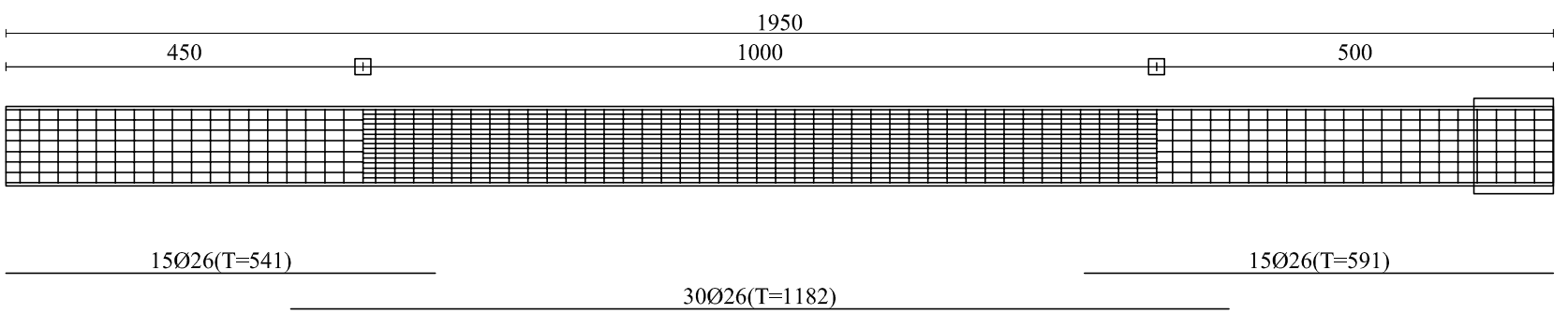
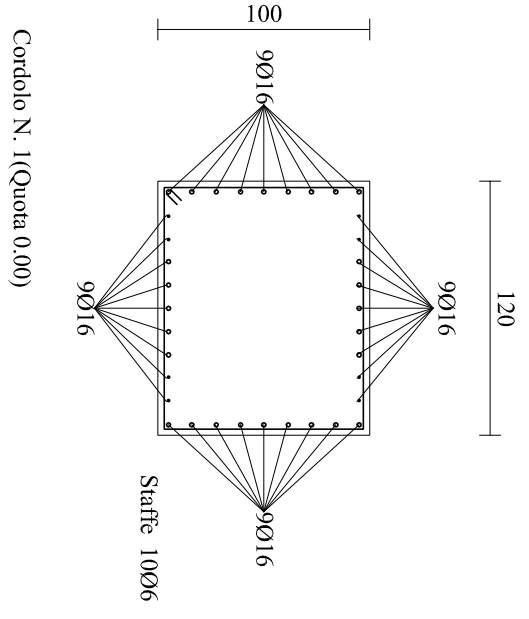
PARATIA H.5.00 - Scala 1:100

CORDOLO PARATIA H.5.00
- Scala 1:40



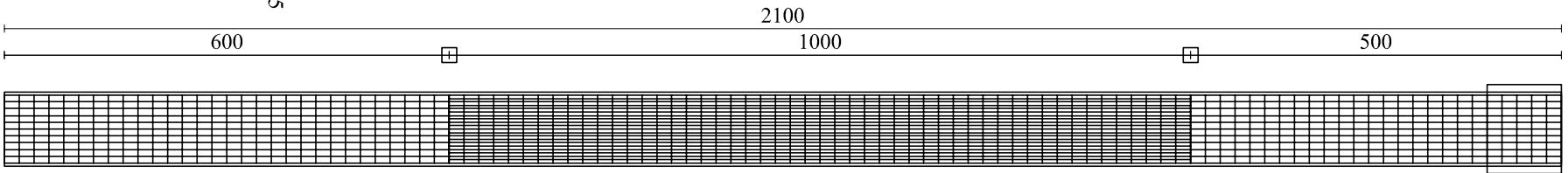
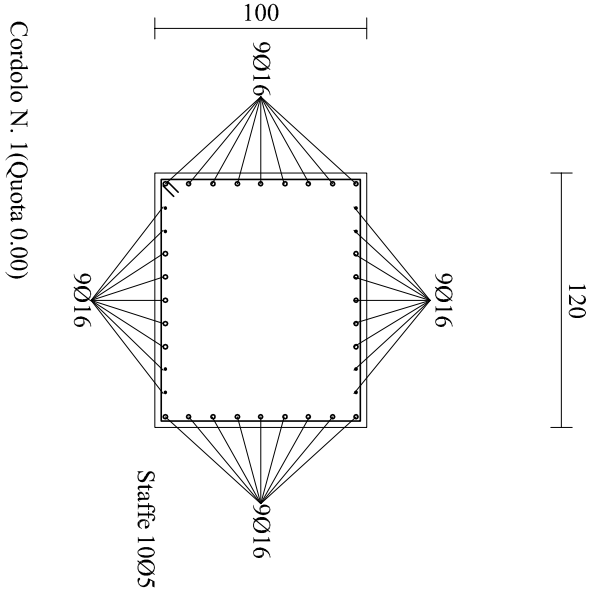
PARATIA H.5.50 - Scala 1:100

CORDOLO PARATIA H.5.50 - Scala 1:40



PARATIA H.6.00 - Scala 1:100

CORDOLO PARATIA H.6.00 - Scala 1:40



20Ø26(T=691)

40Ø26(T=1182)

20Ø26(T=591)

