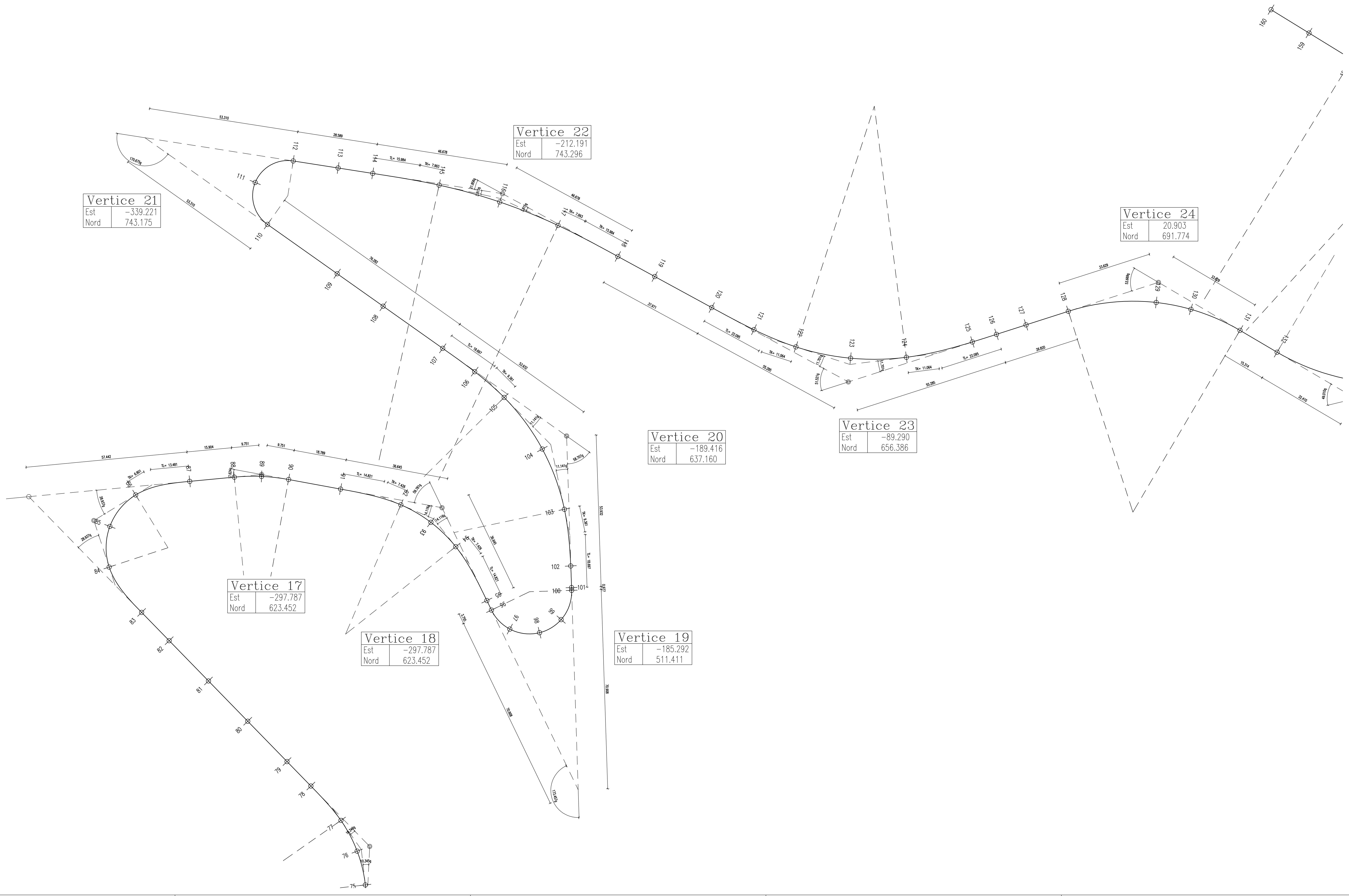


VERTICE 17 XT1 = -307.494 XV = -297.787 XT2 = -288.196 YV = 623.452 YT2 = 621.687 YV = 623.452 YV = 621.687 YV = 618.285 YV = 618.285 SVCI = 0.000 AV = 182.3753 SVC2 = 0.000 SVCI = 22.174 AV = 140.2186 SVC2 = 22.174 SVCI = 0.000 XTCl = -307.494 AD = 17.6237 XTCl = -288.196 XTCl = -248.313 AD = 59.7814 XTCl = -288.818 XTCl = -216.117 AD = 173.4569 YTC1 = 622.529 XC = -300.868 YTC2 = 621.687 YTC1 = 612.685 XC = -267.958 YTC2 = 597.812 YTC1 = 575.268 XC = -202.608 YTC2 = 582.281 YTC1 = 611.103 XC = -268.471 YTC2 = 650.859 YTC1 = 712.380 XC = 594.600 AC2 = 47.329 AC1 = 0.000 YC = 552.943 AC2 = 0.000 AC1 = 33.297 YC = 566.705 AC2 = 0.000 AC1 = 0.000 YC = 581.789 AC2 = 0.000 AC1 = 0.000 YC = 594.600 AC2 = 0.000 R = 70.000 R = 50.000 R = 15.000 R = 80.000 SVRC = 19.378 SVRC = 24.778 SVRC = 40.870 SVRC = 45.772 SVL = 19.378 SVL = 69.126 SVL = 40.870 SVL = 101.772			
VERTICE 18 XT1 = -269.718 XV = -233.679 XT2 = -217.749 YV = 618.285 YT2 = 578.650 YV = 618.285 YV = 618.285 YV = 618.285 YV = 618.285 SVCI = 22.174 AV = 140.2186 SVC2 = 22.174 SVCI = 0.000 AV = 140.2186 SVC2 = 22.174 SVCI = 0.000 XTCl = -248.313 AD = 59.7814 XTCl = -288.818 XTCl = -216.117 AD = 173.4569 XTCl = -187.616 XTCl = -187.616 AD = 187.648 YTC1 = 612.685 XC = -267.958 YTC2 = 597.812 YTC1 = 575.268 XC = -202.608 YTC2 = 582.281 YTC1 = 611.103 XC = -268.471 YTC2 = 650.859 YTC1 = 712.380 XC = 594.600 AC2 = 47.329 AC1 = 33.297 YC = 566.705 AC2 = 0.000 AC1 = 0.000 YC = 581.789 AC2 = 0.000 AC1 = 0.000 YC = 594.600 AC2 = 0.000 R = 50.000 R = 15.000 R = 80.000 SVRC = 24.778 SVRC = 40.870 SVRC = 45.772 SVL = 69.126 SVL = 40.870 SVL = 101.772			
VERTICE 19 XT1 = -216.117 XV = -185.288 XT2 = -187.616 YV = 575.268 YT2 = 511.441 YV = 575.268 YV = 511.441 YV = 582.281 YV = 582.281 SVCI = 0.000 AV = 25.5431 SVC2 = 0.000 SVCI = 28.000 AV = 141.2939 SVC2 = 28.000 SVCI = 0.000 XTCl = -187.616 AD = 173.4569 XTCl = -187.616 XTCl = -190.192 AD = 58.7961 XTCl = -211.934 XTCl = -295.706 AD = 170.6752 YTC1 = 575.268 XC = -202.608 YTC2 = 582.281 YTC1 = 582.281 XC = -268.471 YTC2 = 650.859 YTC1 = 712.380 XC = 594.600 AC2 = 47.329 AC1 = 0.000 YC = 581.789 AC2 = 0.000 AC1 = 47.329 YC = 594.600 AC2 = 0.000 R = 15.000 R = 80.000 SVRC = 40.870 SVRC = 45.772 SVL = 40.870 SVL = 101.772			
VERTICE 20 XT1 = -187.648 XV = -189.416 XT2 = -233.439 YV = 582.281 YT2 = 668.314 YV = 582.281 YV = 637.160 YV = 668.314 YV = 668.314 SVCI = 28.000 AV = 141.2939 SVC2 = 28.000 SVCI = 0.000 AV = 29.3248 SVC2 = 0.000 SVCI = 23.971 XTCl = -190.192 AD = 58.7961 XTCl = -211.934 XTCl = -295.706 AD = 170.6752 XTCl = -284.707 XTCl = -284.707 AD = 170.6752 YTC1 = 582.281 XC = -268.471 YTC2 = 650.859 YTC1 = 712.380 XC = -268.471 YTC2 = 650.859 YTC1 = 712.380 XC = -268.471 YTC2 = 650.859 AC1 = 47.329 YC = 594.600 AC2 = 0.000 AC1 = 0.000 YC = 722.583 AC2 = 0.000 R = 80.000 R = 12.500 SVRC = 45.772 SVRC = 33.512 SVL = 101.772 SVL = 33.512			
VERTICE 21 XT1 = -295.706 XV = -339.221 XT2 = -286.552 YV = 712.380 YT2 = 734.933 YV = 712.380 YV = 743.175 YV = 734.933 YV = 734.933 SVCI = 0.000 AV = 29.3248 SVC2 = 0.000 SVCI = 23.971 AV = 178.1437 SVC2 = 23.971 SVCI = 0.000 XTCl = -295.706 AD = 170.6752 XTCl = -284.707 XTCl = -284.707 AD = 170.6752 XTCl = -284.707 XTCl = -284.707 AD = 170.6752 YTC1 = 712.380 XC = -268.471 YTC2 = 650.859 YTC1 = 712.380 XC = -268.471 YTC2 = 650.859 YTC1 = 712.380 XC = -268.471 YTC2 = 650.859 AC1 = 0.000 YC = 722.583 AC2 = 0.000 AC1 = 69.240 YC = 538.947 AC2 = 0.000 R = 12.500 R = 200.000 SVRC = 33.512 SVRC = 44.693 SVL = 33.512 SVL = 92.635			
VERTICE 22 XT1 = -258.307 XV = -212.191 XT2 = -171.194 YV = 734.933 YT2 = 700.977 YV = 734.933 YV = 723.296 YV = 723.296 YV = 723.296 SVCI = 23.971 AV = 178.1437 SVC2 = 23.971 SVCI = 0.000 AV = 178.1437 SVC2 = 23.971 SVCI = 0.000 XTCl = -284.707 AD = 170.6752 XTCl = -284.707 XTCl = -284.707 AD = 170.6752 XTCl = -284.707 XTCl = -284.707 AD = 170.6752 YTC1 = 726.335 XC = -277.407 YTC2 = 712.014 YTC1 = 726.335 XC = -277.407 YTC2 = 712.014 YTC1 = 726.335 XC = -277.407 YTC2 = 712.014 AC1 = 69.240 YC = 538.947 AC2 = 0.000 AC1 = 0.000 YC = 538.947 AC2 = 0.000 R = 200.000 SVRC = 44.693 SVL = 92.635			

VERTICE 23 XT1 = -137.845 XV = -89.290 XT2 = -36.652 YV = 682.821 YT2 = 674.707 YV = 682.821 YV = 656.386 YV = 691.774 YV = 691.774 SVCI = 33.084 AV = 148.4790 SVC2 = 33.084 SVCI = 0.000 AV = 146.3310 SVC2 = 0.000 XTCl = -107.920 AD = 51.5210 XTCl = -68.664 XTCl = -11.116 AD = 53.6690 XTCl = 49.879 YTC1 = 668.831 XC = -80.058 YTC2 = 665.134 YTC1 = 681.491 XC = 11.816 YTC2 = 674.707 AC1 = 54.567 YC = 754.410 AC2 = 54.567 AC1 = 0.000 YC = 610.083 AC2 = 0.000 R = 90.000 R = 75.000 SVRC = 39.752 SVRC = 63.227 SVL = 105.920 SVL = 63.227			
VERTICE 24 XT1 = -11.116 XV = 20.903 XT2 = 49.879 YV = 681.491 YT2 = 674.707 YV = 681.491 YV = 691.774 YV = 691.774 YV = 691.774 SVCI = 0.000 AV = 146.3310 SVC2 = 0.000 SVCI = 0.000 AV = 146.3310 SVC2 = 0.000 XTCl = -11.116 AD = 53.6690 XTCl = 49.879 XTCl = 49.879 AD = 53.6690 XTCl = 49.879 YTC1 = 681.491 XC = 11.816 YTC2 = 674.707 YTC1 = 681.491 XC = 11.816 YTC2 = 674.707 AC1 = 0.000 YC = 610.083 AC2 = 0.000 R = 75.000 SVRC = 63.227 SVL = 63.227			




Provincia di Chieti
 Settore Lavori Pubblici

PROGETTO ESECUTIVO

LAVORI DI SISTEMAZIONE STRADA PROVINCIALE S.S. 650
 FONDO VALLE TRIGNO SCHIAVI D'ABRUZZO

III° Lotto Funzionale

**PLANIMETRIA DI TRACCIAMENTO 3 DI 4
 DA VERTICE 17 A VERTICE 24**

 STUDIO MONTEPARA Ing. Antonio Montepara	Il Progettista Prof. Ing. Antonio Montepara	TAVOLA 7.3
Responsabile Unico del Procedimento		SCALA : 1:500 DATA : 25/06/2010

Revisione	Data	Descrizione	Redatto	Controllato	Approvato
REV0					
REV1					
REV2					