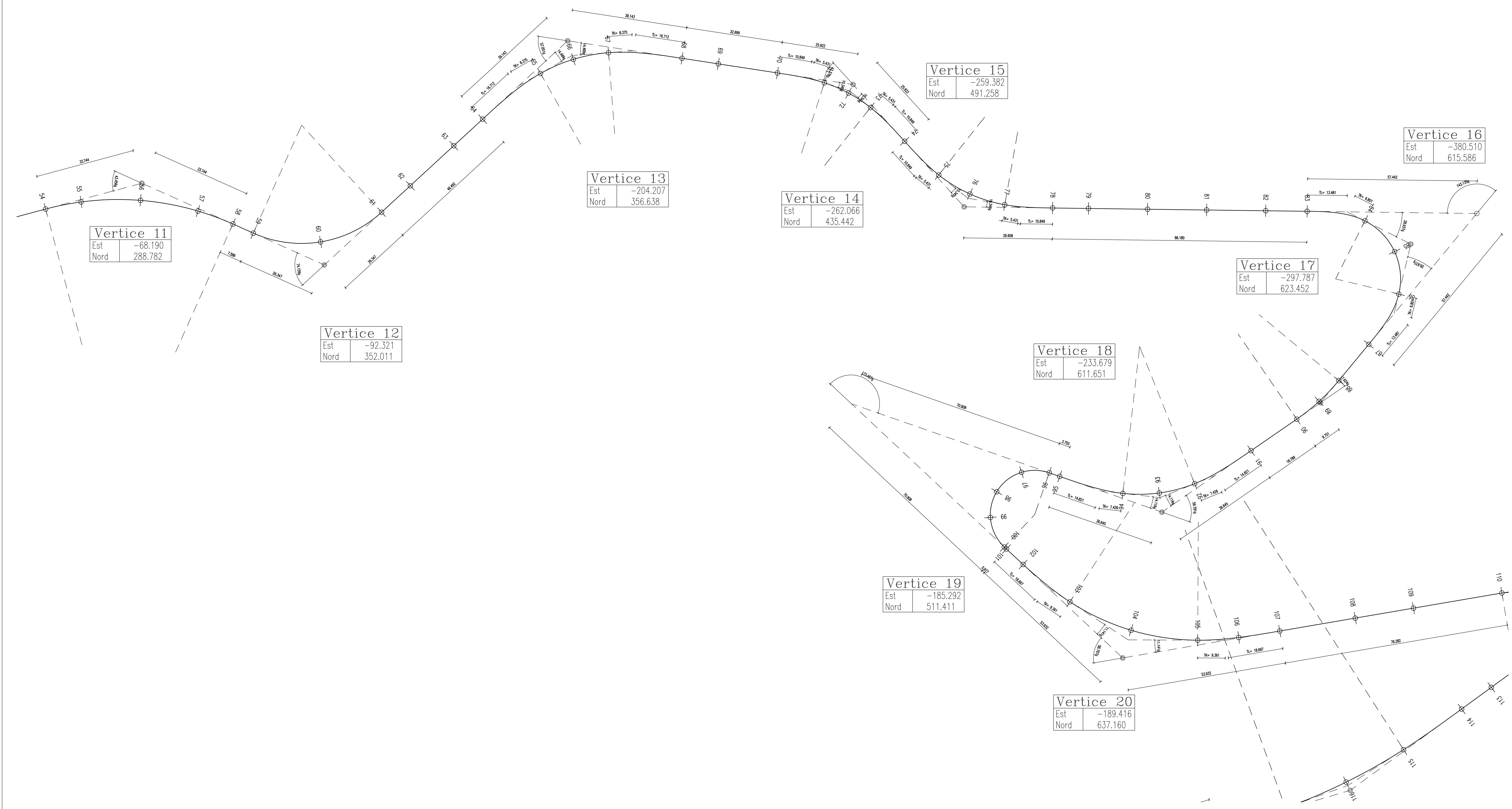


VERTICE 11			VERTICE 12			VERTICE 13			VERTICE 14			VERTICE 15			VERTICE 16		
XT1 = -38.967	KV = -68.190	XT2 = -80.222	XT1 = -82.927	KV = -92.321	XT2 = -118.645	XT1 = -165.097	KV = -204.207	XT2 = -227.373	XT1 = -246.725	KV = -262.066	XT2 = -260.821	XT1 = -260.821	KV = -259.382	XT2 = -280.297	XT1 = -340.426	KV = -380.510	XT2 = -323.326
YT1 = 271.910	YV = 288.782	YT2 = 320.309	YT1 = 327.396	YV = 352.011	YT2 = 353.100	YT1 = 355.021	YV = 356.638	YT2 = 388.190	YT1 = 414.548	YV = 435.442	YT2 = 461.334	YT1 = 461.335	YV = 491.258	YT2 = 512.716	YT1 = 574.443	YV = 615.586	YT2 = 621.024
SVC1 = 0.000	AV = 156.5441	SVC2 = 0.000	SVC1 = 0.000	AV = 125.8409	SVC2 = 0.000	SVC1 = 25.000	AV = 142.9494	SVC2 = 25.000	SVC1 = 16.251	AV = 156.6225	SVC2 = 16.251	SVC1 = 16.251	AV = 147.7709	SVC2 = 16.251	SVC1 = 20.000	AV = 56.8650	SVC2 = 20.000
KT1 = -38.967	AD = 43.4339	KT2 = -80.222	KT1 = -82.927	AD = 74.1591	KT2 = -118.645	KT1 = -165.097	AD = 57.0936	KT2 = -211.132	KT1 = -246.725	AD = 43.3778	KT2 = -260.821	KT1 = -260.821	AD = 52.2591	KT2 = -269.606	KT1 = -340.426	AD = 143.1530	KT2 = -342.547
YTC1 = 271.910	KC = 8.534	YTC2 = 320.309	YTC1 = 327.396	KC = -120.298	YTC2 = 353.100	YTC1 = 357.933	KC = -178.273	YTC2 = 369.259	YTC1 = 428.133	KC = -211.049	YTC2 = 445.103	YTC1 = 477.566	KC = -310.593	YTC2 = 500.493	YTC1 = 590.559	KC = -331.060	YTC2 = 616.197
AC1 = 0.000	YC = 354.182	AC2 = 0.000	AC1 = 0.000	YC = 313.134	AC2 = 0.000	AC1 = 37.081	YC = 410.961	AC2 = 37.081	AC1 = 28.505	YC = 450.813	AC2 = 28.505	AC1 = 28.505	YC = 471.856	AC2 = 28.505	AC1 = 20.976	YC = 597.434	AC2 = 20.976
R = 70.000	R = 95.000	R = 35.000	R = 40.000	R = 40.000	R = 35.000	R = 35.000	R = 35.000	R = 35.000	R = 30.000	R = 30.000	R = 30.000	R = 30.000	R = 30.000	R = 30.000	R = 30.000	R = 30.000	R = 30.000
SVRC = 64.847	SVRC = 64.847	SVRC = 64.847	SVRC = 46.596	SVRC = 46.596	SVRC = 46.596	SVRC = 24.288	SVRC = 24.288	SVRC = 24.288	SVRC = 17.818	SVRC = 17.818	SVRC = 17.818	SVRC = 24.770	SVRC = 24.770	SVRC = 24.770	SVRC = 29.464	SVRC = 29.464	SVRC = 29.464
SVL = 64.847	SVL = 64.847	SVL = 64.847	SVL = 46.596	SVL = 46.596	SVL = 46.596	SVL = 74.288	SVL = 74.288	SVL = 74.288	SVL = 50.520	SVL = 50.520	SVL = 50.520	SVL = 57.272	SVL = 57.272	SVL = 57.272	SVL = 69.464	SVL = 69.464	SVL = 69.464

VERTICE 17			VERTICE 18			VERTICE 19			VERTICE 20		
XT1 = -307.494	KV = -297.787	XT2 = -288.196	XT1 = -269.718	KV = -233.679	XT2 = -217.749	XT1 = -216.117	KV = -185.292	XT2 = -187.616	XT1 = -187.648	KV = -189.416	XT2 = -233.439
YT1 = 622.559	YV = 623.452	YT2 = 621.687	YT1 = 618.285	YV = 611.651	YT2 = 578.650	YT1 = 575.268	YV = 511.411	YT2 = 582.291	YT1 = 583.257	YV = 637.160	YT2 = 668.314
SVC1 = 0.000	AV = 182.3763	SVC2 = 0.000	SVC1 = 22.174	AV = 140.2186	SVC2 = 22.174	SVC1 = 0.000	AV = 26.5431	SVC2 = 0.000	SVC1 = 28.000	AV = 141.2939	SVC2 = 28.000
KT1 = -307.494	AD = 1762.97	KT2 = -288.196	KT1 = -248.313	AD = 59.7814	KT2 = -228.812	KT1 = -216.117	AD = 173.4569	KT2 = -187.616	KT1 = -190.192	AD = 58.7061	KT2 = -211.594
YTC1 = 622.559	KC = -308.868	YTC2 = 621.687	YTC1 = 612.685	KC = -267.598	YTC2 = 597.812	YTC1 = 575.268	KC = -282.088	YTC2 = 588.281	YTC1 = 611.083	KC = -268.471	YTC2 = 630.859
AC1 = 0.000	YC = 552.843	AC2 = 0.000	AC1 = 33.297	YC = 566.705	AC2 = 33.297	AC1 = 0.000	YC = 581.789	AC2 = 0.000	AC1 = 47.329	YC = 594.600	AC2 = 47.329
R = 70.000	R = 70.000	R = 70.000	R = 50.000	R = 50.000	R = 50.000	R = 15.000	R = 15.000	R = 15.000	R = 60.000	R = 60.000	R = 60.000
SVRC = 19.378	SVRC = 19.378	SVRC = 19.378	SVRC = 24.778	SVRC = 24.778	SVRC = 24.778	SVRC = 40.870	SVRC = 40.870	SVRC = 40.870	SVRC = 45.772	SVRC = 45.772	SVRC = 45.772
SVL = 19.378	SVL = 19.378	SVL = 19.378	SVL = 69.126	SVL = 69.126	SVL = 69.126	SVL = 40.870	SVL = 40.870	SVL = 40.870	SVL = 101.772	SVL = 101.772	SVL = 101.772




**Provincia di Chieti**  
 Settore Lavori Pubblici

**PROGETTO ESECUTIVO**

LAVORI DI SISTEMAZIONE STRADA PROVINCIALE S.S. 650  
 FONDO VALLE TRIGNO SCHIAVI D'ABRUZZO

**III° Lotto Funzionale**

**PLANIMETRIA DI TRACCIAMENTO 2 DI 4  
 DA VERTICE 11 A VERTICE 20**

---

**STUDIO MONTIPIANI**  
 INGEGNERIA CIVILE  
 Via S. Maria 12  
 66024 Dossena (CH)  
 Tel. 0871-998422  
 Fax: 0871-998422

Il Progettista  
 Prof. Ing. Antonio Montepara



Responsabile Unico del Procedimento

**TAVOLA**  
 7.2

SCALA : 1:500  
 DATA : 25/06/2010

1271/ET/11/07.02/RO

Revisione	Data	Descrizione	Realizzato	Controllato	Approvato
REVO					
REV 1					
REV 2					