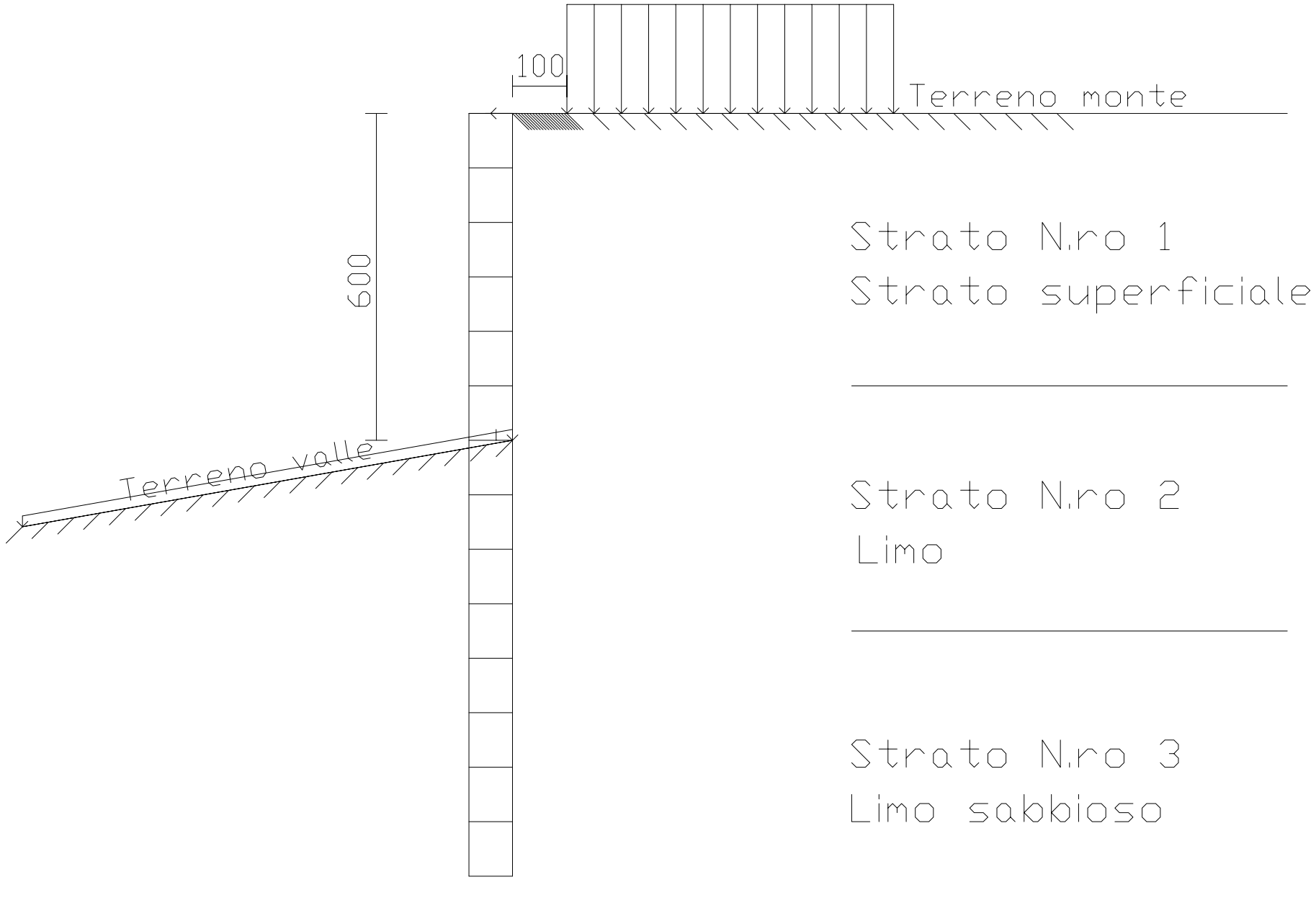
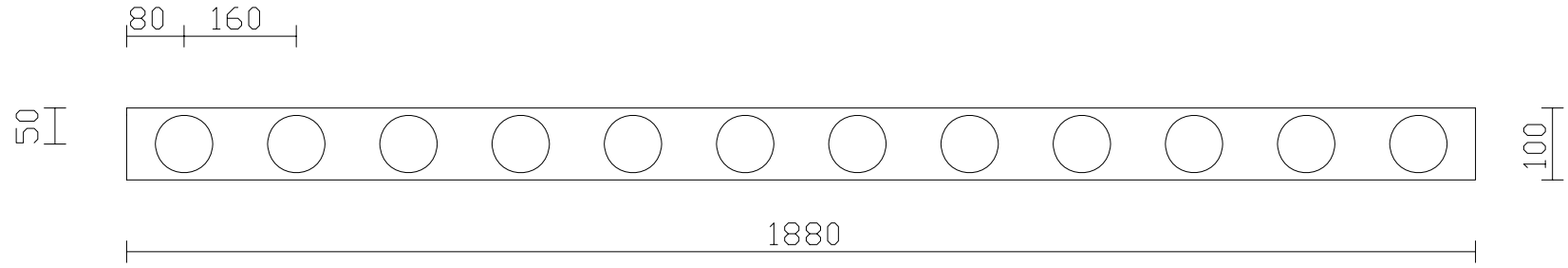


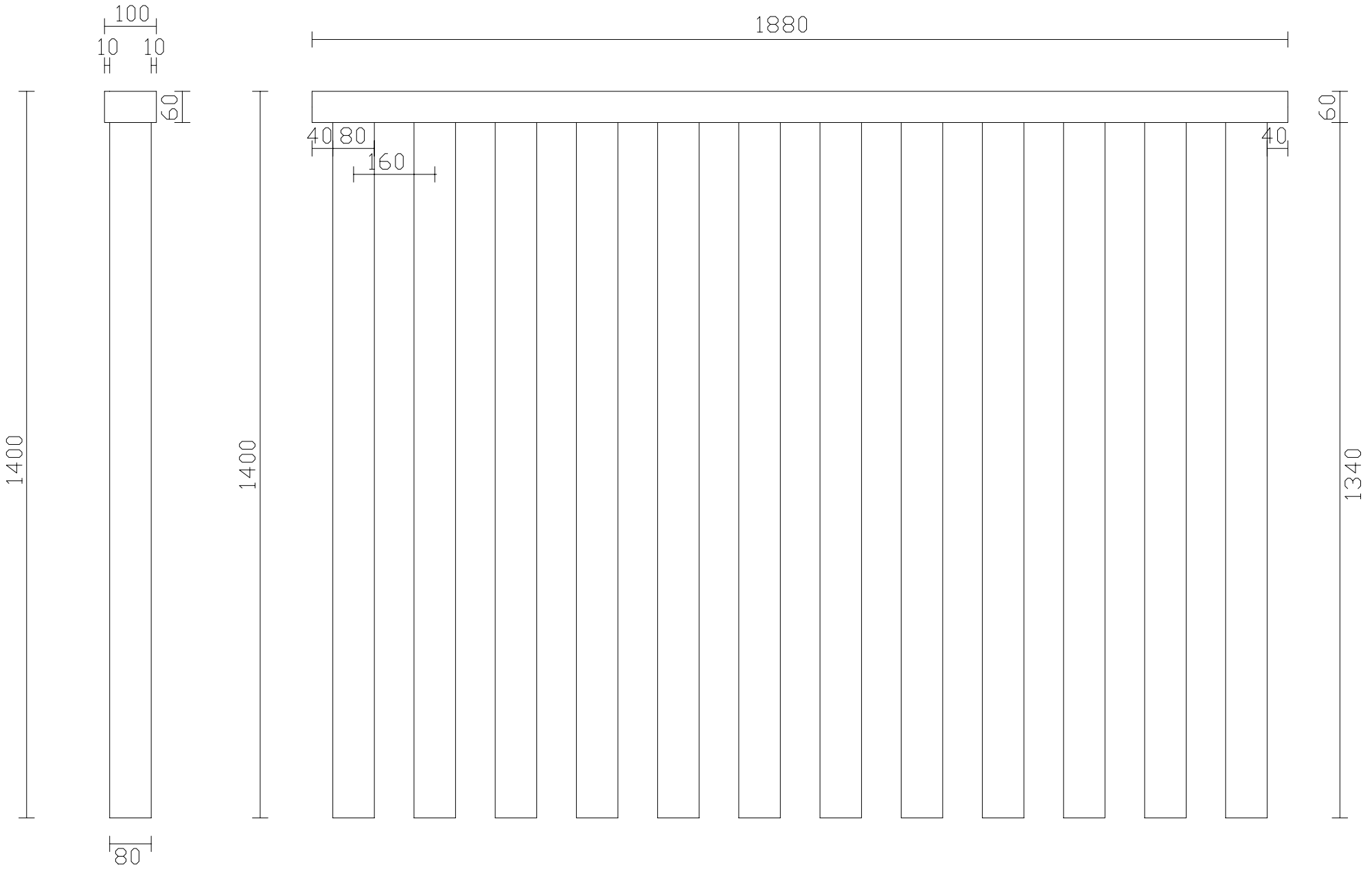
SCHEMA STRATIGRAFICO



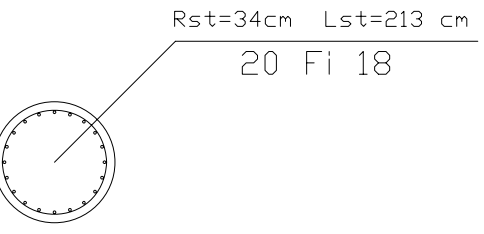
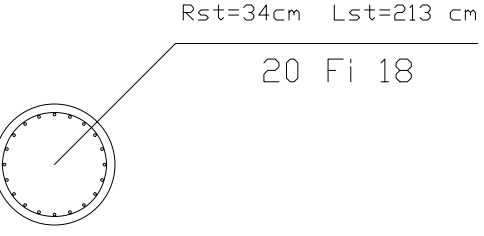
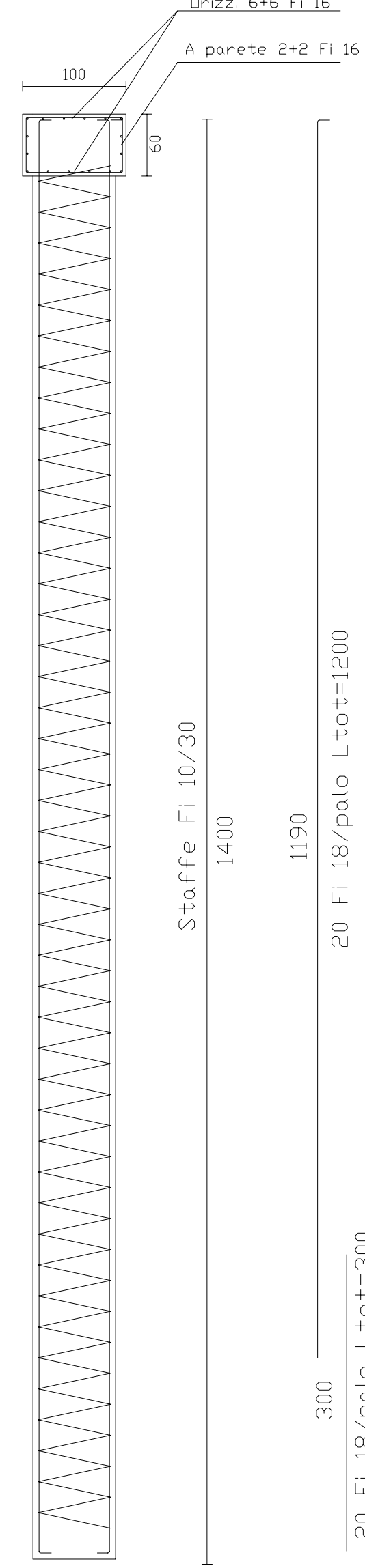
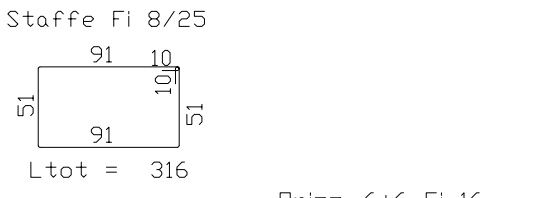
PIANTA



PROSPETTO



ARMATURA PALI Ø80 H= 14 m
Intervento n. 12



Provincia di Chieti

SETTORE N. 6

Planificazione, Progettazione e Manutenzione Stradale
Concessioni - Espropri
SERVIZIO AMMINISTRATIVO VIABILITA'

PROGETTO ESECUTIVO

LAVORI DI MANUTENZIONE STRAORDINARIA E RISANAMENTO
FRANE SULLA S.P. EX S.S. 364 ATESSA - CASALBORDINO

INTERVENTO N° 12

ESECUTIVO PARATIA

TAVOLA
20.1

SCALA VEDI

DATA

IL RESPONSABILE DEL PROCEDIMENTO

Dott. Ing. Fantasia Augusto Giacomo

Via Cavalieri di Vittorio Veneto, 43 - 66041 Atessa (CH)
Tel. 0872/862196 - Cellulare 328/3879004

E-mail: ingfantasia@tin.it

Spazio Riservato agli Uffici